

Non-Contrast CT & MR

Patient Study

AMR
ARLINGTON MEDICAL RESOURCES INC.

A Decision Resources, Inc. Company

Executive Summary

AMR's *Non-Contrast CT & MR Patient Study* is a semi-annual syndicated audit monitoring the prevalence of non-contrast enhanced Computed Tomography and Magnetic Resonance procedures. The *Non-Contrast CT & MR Patient Study* complements the data presented in the Imaging Market Guide.

The *Non-Contrast CT & MR Patient Study* presents fact based clinical details about the patients who underwent these procedures including patient demographics, the clinical reason for procedure, specialty of the referring physician and more.

The audit has been in continuous publication since 1995 covering the USA market. Semi-annual publication began in 2005.

The audit gives you the ability to analyze the hospital and non-hospital markets, assess your competition, identify potential new opportunities and evaluate the impact of industry changes.

Introduction

The *Non-Contrast CT & MR Patient Study* is a unique resource tracking non-contrast enhanced procedures.

The focus of the audit is on those patients who had a CT or MR procedure and no contrast agent was administered during the procedure. The clinical data can provide the user with insight when comparing procedures or patients when a contrast agent was administered versus when no contrast agent was administered.

Audit Highlights

The *Non-Contrast CT & MR Patient Study* currently covers the United States with the capability of covering the five major European countries, Japan, China and Korea.

The USA audit is:

- Published twice yearly in March and September
- Time periods are January-June and July-December

Market segments covered by the audit include:

- Hospital
- Freestanding Imaging Centers

Company Background

Arlington Medical Resources, Inc., AMR, is an international market research company servicing the pharmaceutical and diagnostic imaging industries. Our offices in Philadelphia and Brussels enable us to effectively conduct syndicated and custom market research studies in the USA and Europe, while relationships with established researchers in Japan, China and Korea have extended our efforts to these very important marketplaces.

Arlington Medical Resources, Inc.
www.amr-data.com
sales@amr-data.com

Philadelphia (610) 722-5511
Brussels +32(2) 732-6160

Non-Contrast CT & MR

Patient Study

AMR
ARLINGTON MEDICAL RESOURCES INC.

A Decision Resources, Inc. Company

Audit Highlights (continued)

The audit is comprised of two data types:

- Procedural Count Data
- Clinical Patient Data

Procedural count data is a retrospective count (sum) of the volume of procedures performed during the audit time period. A sample of diagnostic imaging facilities provide procedural count data which is then projected to establish national totals utilizing a stratified projection technique. This data answers the question "How many non-contrast enhanced procedures were performed during the audited time period?"

Clinical patient data are obtained from a random sample of actual clinical profiles of patients undergoing non-contrast enhanced procedures. Data collected include the following elements:

- Patient Demographics (age and sex)
- Clinical reason for performing the procedure
- Inpatient vs. Outpatient status
- Specialty of the physician ordering the procedure

Availability

The *Non-Contrast CT & MR Patient Study* data is available in several formats:

- Adobe® Acrobat® PDF documents.
- Electronic data-retrieval version of the database (single seat or network) which enables the user to create specific queries to filter or "slice" the data.
- Custom analysis free of charge to audit subscribers.

Custom Research

Through our multi-national hospital, freestanding imaging center and private physician panel, AMR provides *custom studies* tailored to your specific diagnostic imaging needs. Please contact us for more information on custom research potential.

This Audit Enables You To

- **Identify the specialty of the physician ordering the procedure.**
- **Assess the top procedures performed without contrast agents.**
- **Evaluate patient demographics by procedure.**
- **Analyze the reason for procedure comparing contrast enhanced patients to non-contrast enhanced patients.**

These are just a few of the many capabilities available with this informative audit.

Arlington Medical Resources, Inc.
www.amr-data.com
sales@amr-data.com

Philadelphia (610) 722-5511
Brussels +32(2) 732-6160

Non-Contrast CT & MR

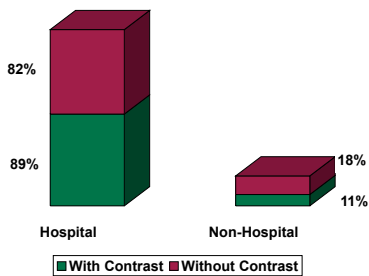
Patient Study

Applications

AMR's unique multi-dimensional data structure allows data to be analyzed within user-determined guidelines, such as:

Market Segment Analysis

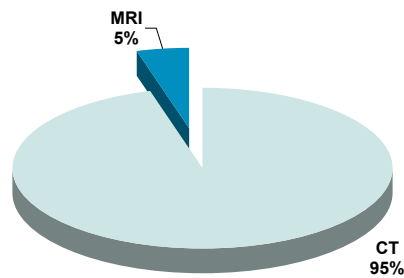
Market Distribution of Procedures - CT - Thorax



"Compare the market distribution of a procedure."

...making a direct comparison of procedure volumes across market segments,

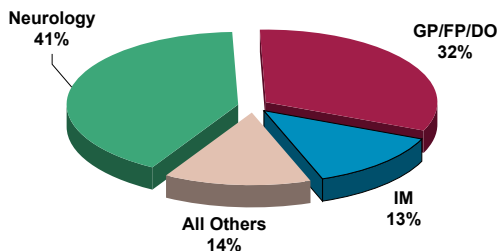
Abdomen (Complete) Procedure Market Share by Modality



"Analyze a specific procedure across modalities."

Referring Physician Specialty Analysis

Referring Physician Specialty - MRI Brain/Brain Stem Procedure
% of Total Non-Contrast Procedures



"Compare referring physician specialties."

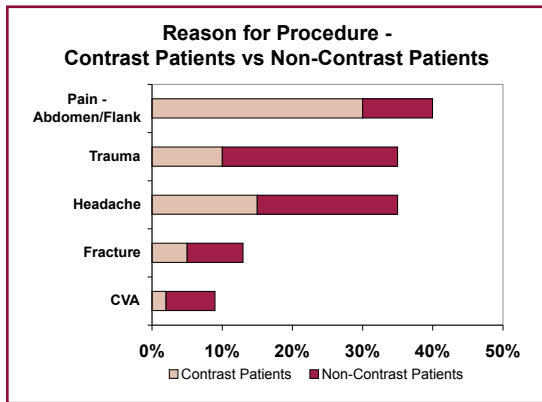
...identifying the referring physician specialty for specific procedures,

Non-Contrast CT & MR

Patient Study

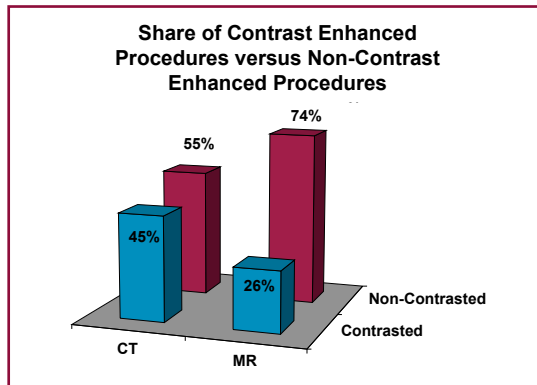
Applications (continued)

Contrast Usage Analysis

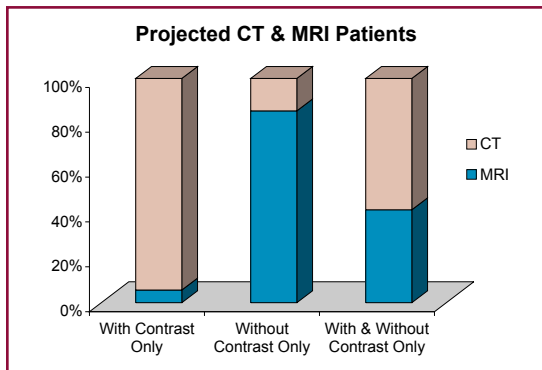


...determining patient volume distribution based on reason for procedure,

"Analyze the reason for procedure by contrast and non-contrast patients."



"Identify the share of procedures by modality."



"Compare the share of patients by modality."

...exploring diagnostic procedure volume across market segments.



Non-Contrast CT & MR

Patient Study

■ *Other Imaging Studies*

- The Imaging Market Guide
(USA, Europe, Japan, China & Korea)
- The Angiography Market Guide
(USA & Europe)
- The Contrast Package Market Guide
(USA, Europe and Japan)
- The Echocardiography Market Guide
(USA & Europe)
- The Myocardial Perfusion Study
Market Guide
(USA & Europe)
- The Non-Cardiac Ultrasound
Patient Study
(USA)
- The Echocardiography
Monthly Monitor
(USA)
- The Myocardial Perfusion Study
Monthly Monitor
(USA)

AMR
ARLINGTON MEDICAL RESOURCES INC.

A Decision Resources, Inc. Company

*Please contact us for
more information
about the
Non-Contrast
CT & MR Patient Study
or any other audits.*

Arlington Medical Resources, Inc.
www.amr-data.com
sales@amr-data.com

Philadelphia (610) 722-5511
Brussels +32(2) 732-6160